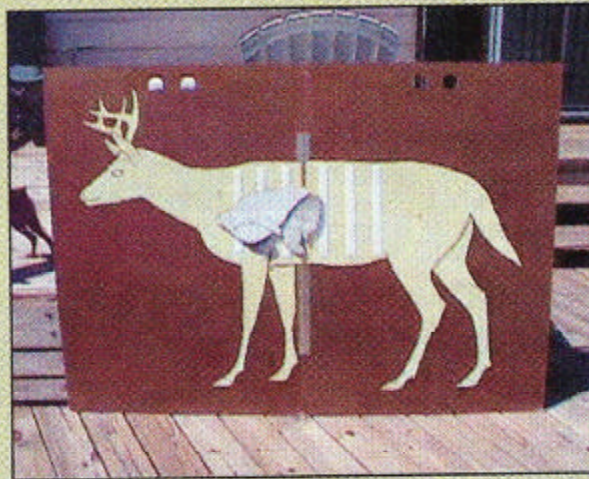


INSTRUCTOR'S WORKSHOP

Two-dimensional deer 'diagram' for the classroom

Used as a teaching aid in proper shot placement, this full-size deer exhibit features "organs" that attach with hook-and-loop nylon fasteners.

The deer cutout, made from fiberboard or particle board and hinged in the middle, folds in half for easy storage



and carrying, and the organs are all anatomically correct. Students are

asked to come to the front of the class and place the organs (heart, liver, lungs, etc.) where they think they belong. This exercise shows how important it is to know animal anatomy.